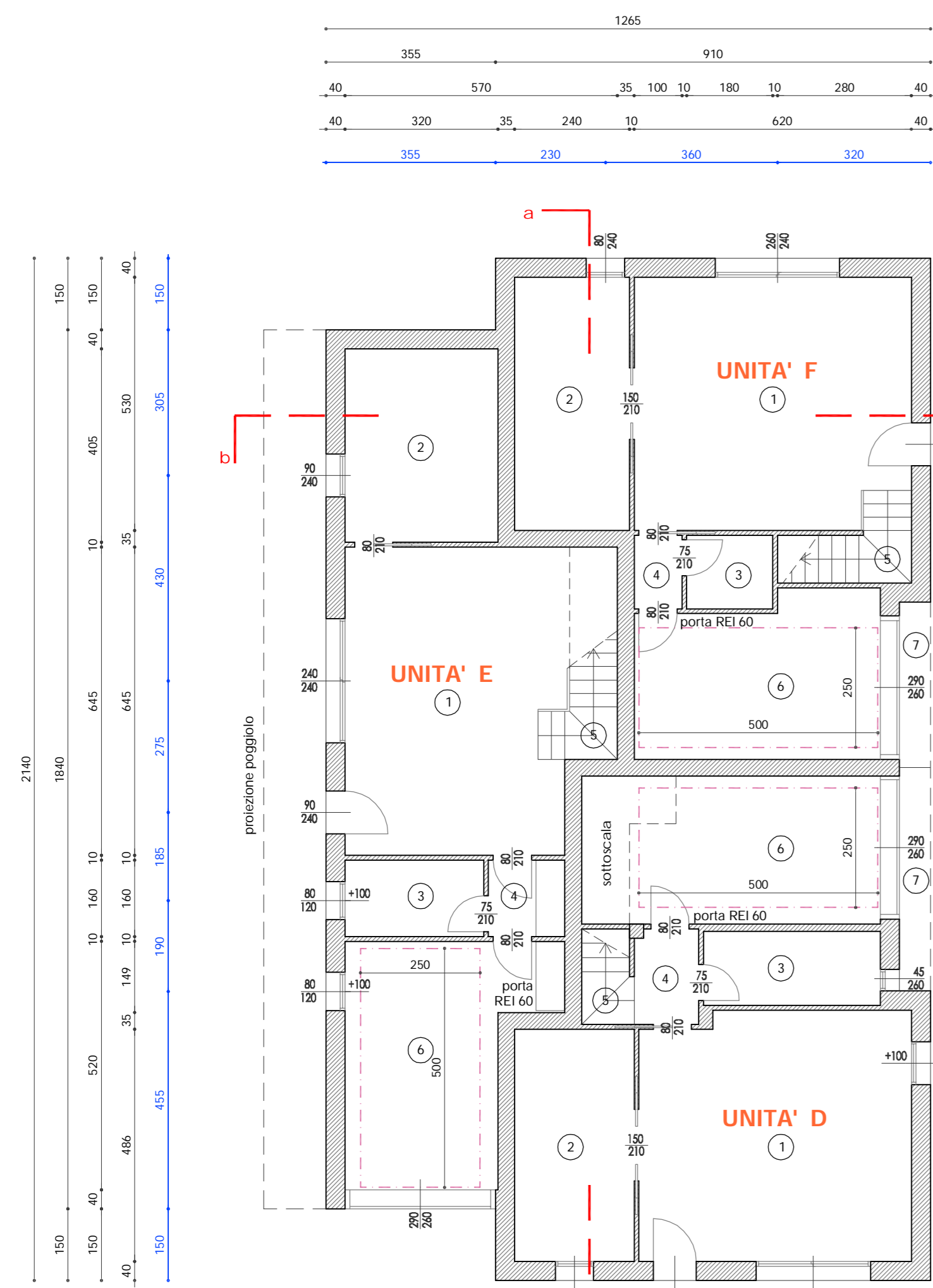
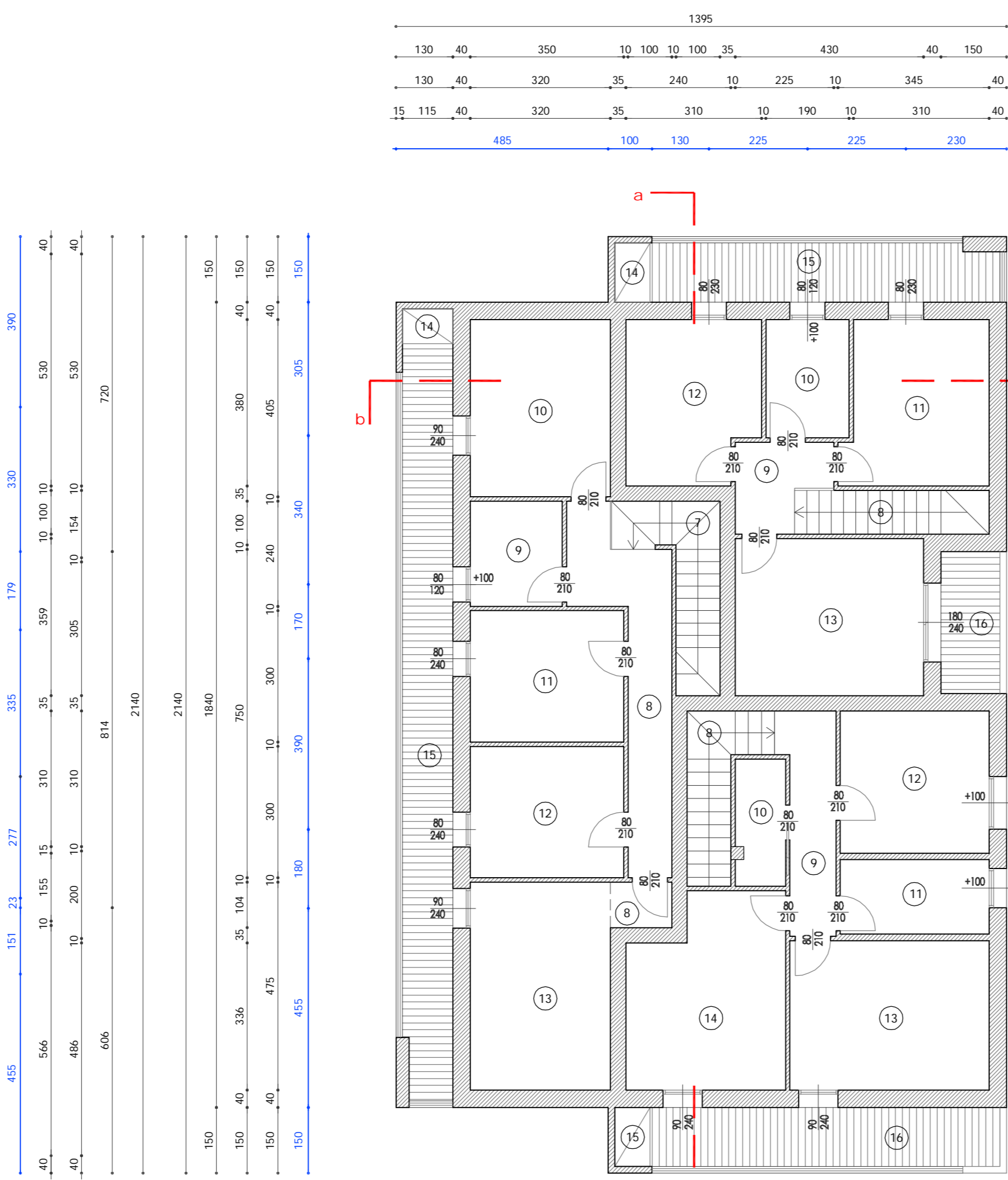


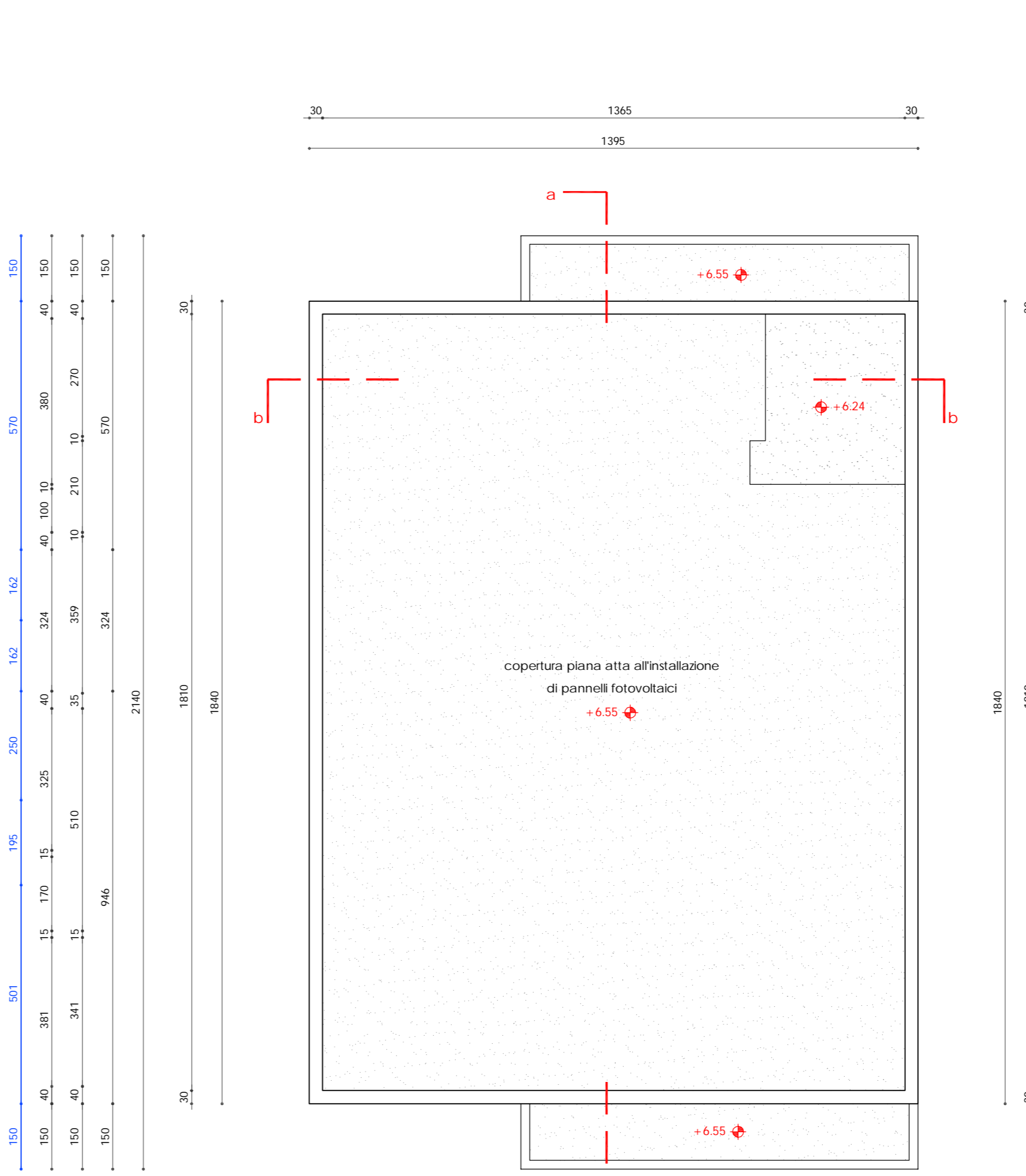
LOTTO 3 - FABBRICATO TRIFAMILIARE A OVEST



pianta piano terra
scala 1.100



pianta piano primo
scala 1.100



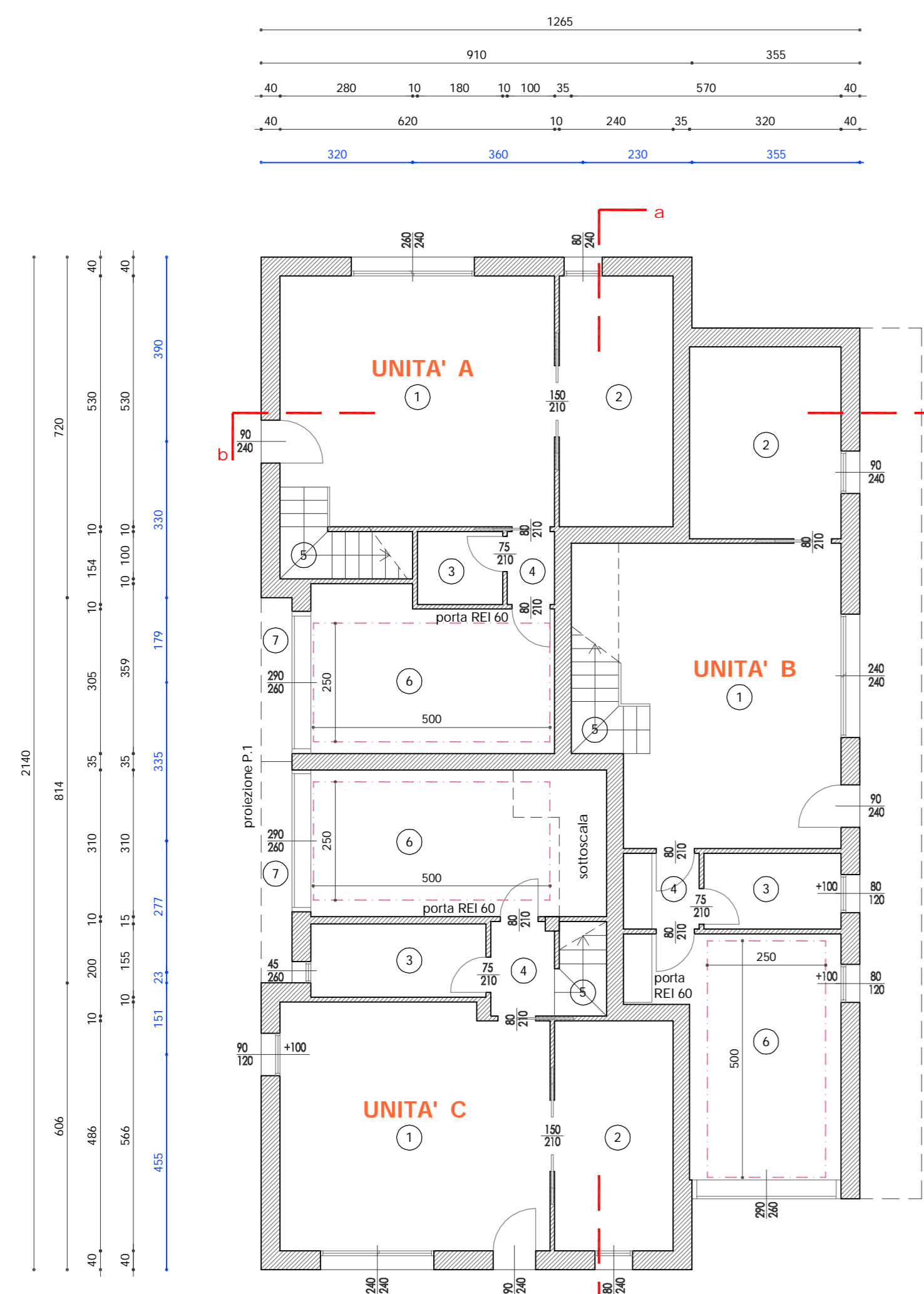
piano copertura
scala 1.100

UNITA' A = F							
N°	Piano	Destinazione	Sup. (mq)	Altezza (m)	Vol. comp. (mc)	Vol. NON comp. (mc)	Sup. Fin. Apr. (mq)
1	T	Soggiorno	29,86	2,70	80,62	---	6,24+18
2	T	Cucina	12,72	2,70	34,34	---	1,82+18
3	T	Wc	2,77	2,40	6,66	---	---
4	T	Disimpegno	1,54	2,40	3,70	---	---
5	T	Varco scala	3,74	2,70	---	---	10,10
6	T	Garage + Rip.	16,87	2,70	0,56	45,00	>1100
7	T	Portico	2,25	2,60	---	---	---
8	1°	Varco scala	4,45	2,70	---	---	12,02
9	1°	Disimpegno	3,79	2,40	9,10	---	---
10	1°	Bagno	5,13	2,40	12,31	---	0,96
11	1°	Scoberto	12,13	2,39	---	28,99	1,82+18
12	1°	Camera	11,01	2,70	29,73	---	1,82+18
13	1°	Camera	15,41	2,70	41,89	---	4,32+18
14	1°	Varco tecnico	1,08	2,60	---	---	---
15	1°	Loggia	10,56	2,60	---	---	---
16	1°	Loggia	4,37	2,60	---	---	---
TOTALE P.T. (esclusi v.l. - logge)			121,70		218,68		96,10

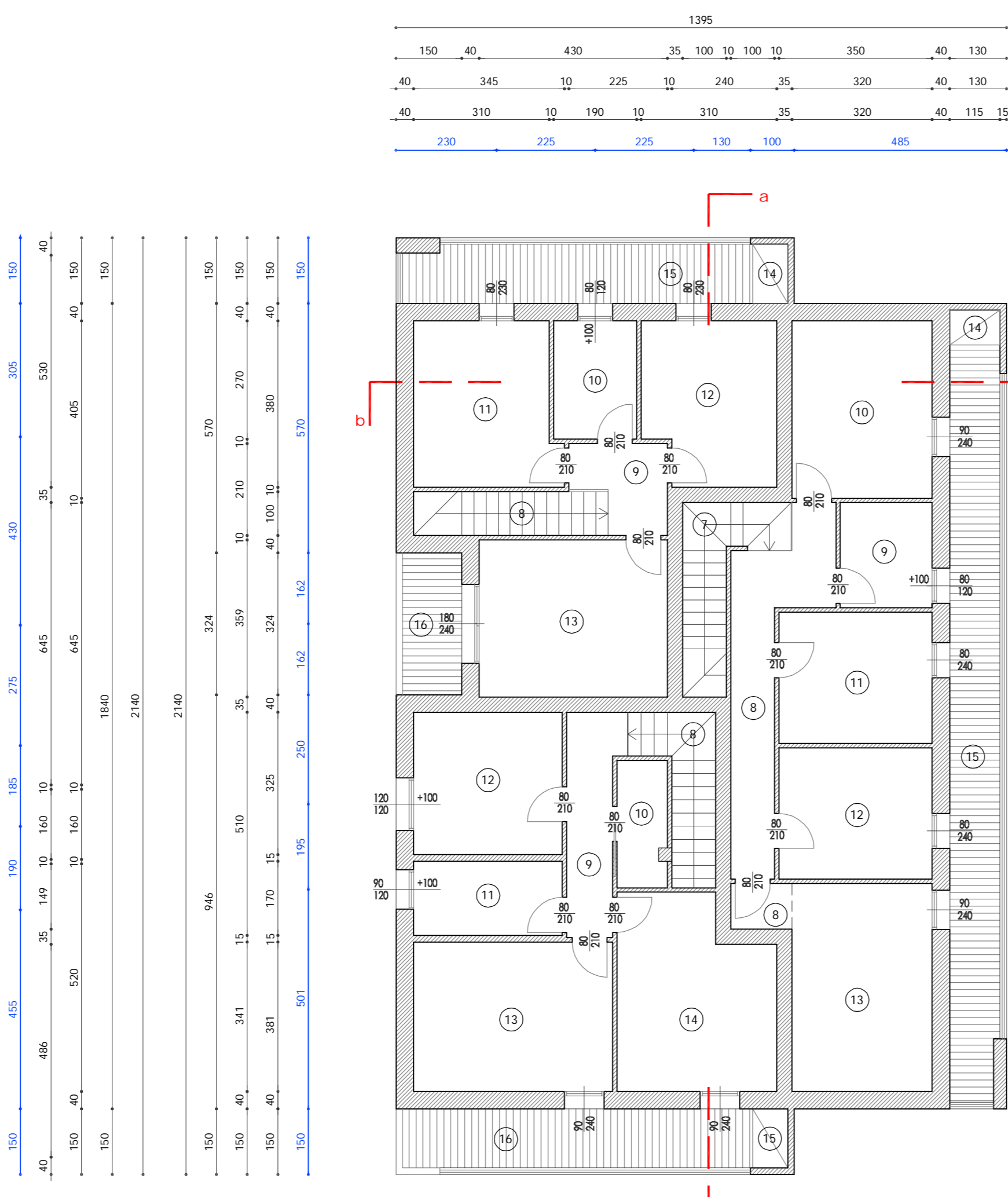
UNITA' B = E							
N°	Piano	Destinazione	Sup. (mq)	Altezza (m)	Vol. comp. (mc)	Vol. NON comp. (mc)	Sup. Fin. Apr. (mq)
1	T	Soggiorno	29,25	2,70	78,88	---	6,24+18
2	T	Cucina	12,96	2,70	34,99	---	1,82+18
3	T	Bagno	4,81	2,40	11,14	---	0,96
4	T	Disimpegno	2,56	2,40	6,14	---	---
5	T	Varco scala	5,10	2,70	---	---	13,77
6	T	Garage + Rip.	16,73	2,70	5,57	45,00	>1100
7	1°	Varco scala	6,52	2,70	---	---	16,25
8	1°	Disimpegno	11,84	2,40	28,51	---	---
9	1°	Bagno	5,04	2,40	12,10	---	0,96
10	1°	Camera	12,96	2,70	34,99	---	1,82+18
11	1°	Camera	10,50	2,70	28,35	---	1,82+18
12	1°	Camera	10,50	2,70	28,35	---	1,82+18
13	1°	Camera	15,20	2,70	41,04	---	1,82+18
14	1°	Varco tecnico	0,82	2,60	---	---	---
15	1°	Loggia	19,68	2,60	---	---	---
TOTALE P.T. (esclusi v.l. - logge)			145,34		310,16		75,02

UNITA' C = D							
N°	Piano	Destinazione	Sup. (mq)	Altezza (m)	Vol. comp. (mc)	Vol. NON comp. (mc)	Sup. Fin. Apr. (mq)
1	T	Soggiorno	29,36	2,70	79,27	---	6,84+18
2	T	Cucina	12,15	2,70	32,81	---	1,82+18
3	T	Bagno	5,74	2,40	13,78	---	1,17
4	T	Disimpegno	2,66	2,40	6,38	---	---
5	T	Varco scala	2,10	2,70	---	---	5,67
6	T	Garage + Rip.	16,28	2,70	---	43,96	>1100
7	T	Portico	3,04	2,60	---	---	---
8	1°	Varco scala	5,01	2,70	---	---	13,53
9	1°	Disimpegno	6,76	2,40	16,22	---	---
10	1°	Ripetiglio	3,29	2,40	7,90	---	---
11	1°	Bagno	5,78	2,40	13,87	---	1,08
12	1°	Camera	11,65	2,70	31,47	---	1,82+18
13	1°	Camera	15,52	2,70	41,90	---	2,16
14	1°	Camera	14,94	2,70	40,34	---	2,16+18
15	1°	Varco tecnico	1,58	2,60	---	---	---
16	1°	Loggia	10,73	2,60	---	---	---
TOTALE P.T. (esclusi v.l. - logge)			132,68		279,91		65,15

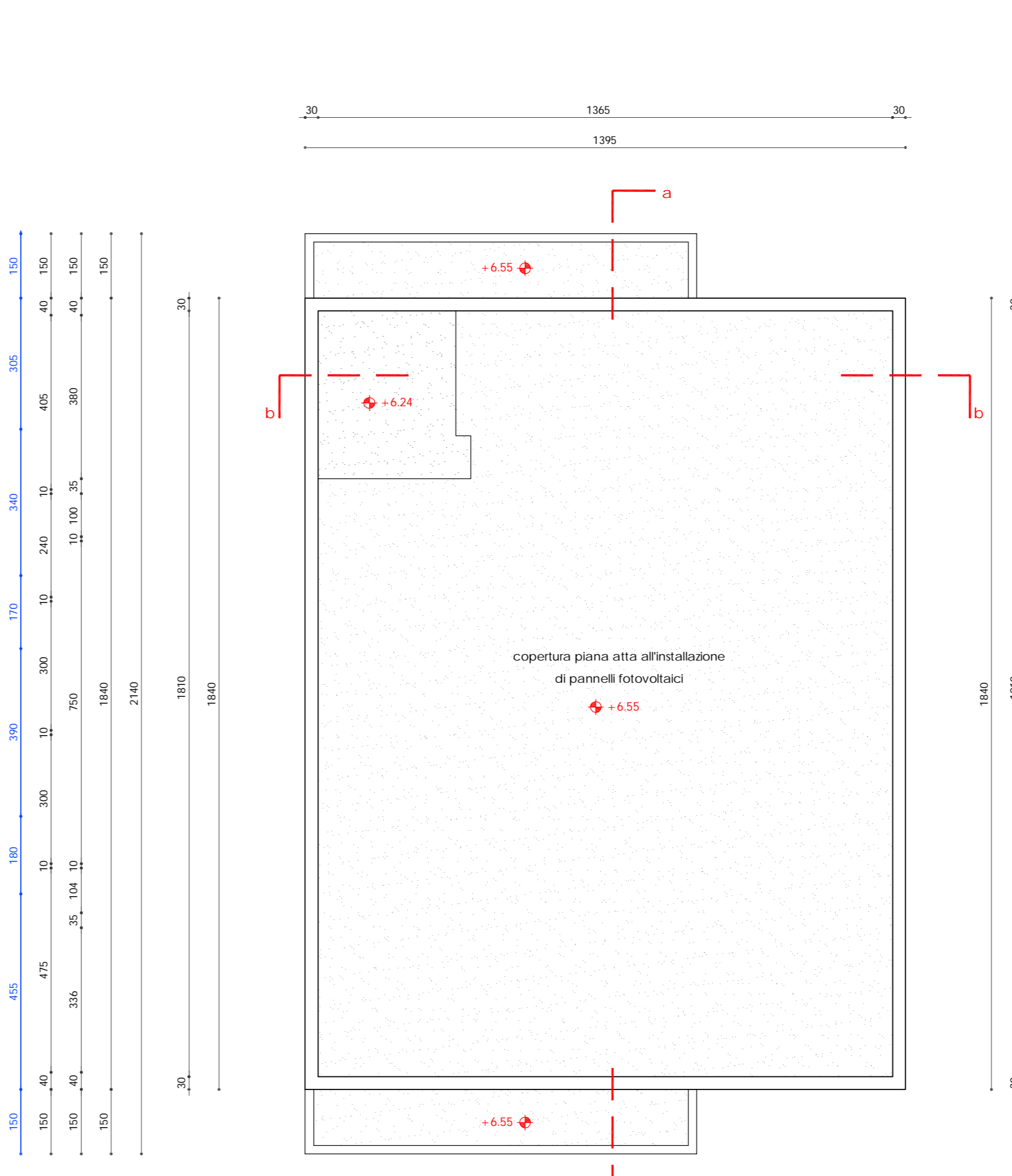
LOTTO 3 - FABBRICATO TRIFAMILIARE A EST



pianta piano terra
scala 1.100



pianta piano primo
scala 1.100



piano copertura
scala 1.100

ARCHINETE! URBAN LUXURY BRAND



ARCHINETE! BUILDING & MANAGEMENT
 Novara Padovana (P) 35027 - Via Roma 151 - tel/fax: 049 8933500 - e-mail: info@archinete.it - pec: archinete@pec.it
BARBARA LAZZARIN Ingegnere
MASSIMO WEBBER geometra

Edilrite Costruzioni S.a.S.
 Via Roma n. 220 - II piano, Albignasego (PD)
 C.F. e P.Iva: 02703840278

TITOLO: Stato di Progetto - Fabbricati Trifamiliari - lotto 3		LABORATORIO N°	
piante P.T. - P.1. - copertura		T15.0	
DATA: DICEMBRE 2019	SCALA: 1:100	1ª EMISSIONE	

**PIANO DI LOTTIZZAZIONE
Z.T.O.C2/PER 1
PRECISE DISPOSIZIONI**

LUBICAZIONE: Comune di Albignasego, angolo tra via A. Manzoni e via della Costituzione N.C.T. Foglio 14, mappali 886, 888.